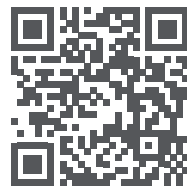




TENON[®]

PRODUCT GUIDE

TENONSOLUTIONS.COM

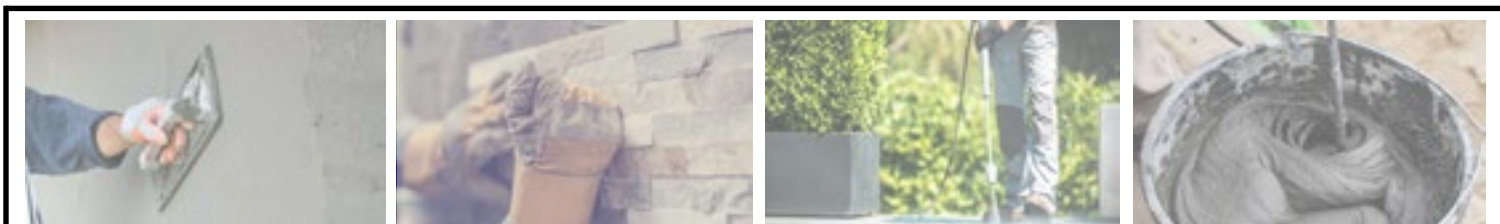


formulations that deliver

innovation
quality
peace of mind

What is Tenon?

Tenon is TCC Materials' comprehensive portfolio of cementitious materials and chemicals designed for high performance, convenience, and peace of mind. Tenon products help you get the job done!



Repair & Restoration

Mortars and grouts to meet specified engineering performance requirements. Designed to meet the service life and sustainability requirements of your structure.

High Performance Masonry

Technology and chemistry to meet your demanding needs. Designed to save you labor while meeting your project requirements.

Architectural Sealers

Permeable and impermeable sealers to enhance the performance and aesthetics of your project.

Construction Chemicals

Cures, cleaners, and admixtures aiding in optimal performance for your construction project. Balancing the needs of appearance and performance.

- What Is Tenon?** 2
- Repair & Restoration** 4
 - Horizontal Repair 5
 - Anchoring 9
 - Self-Leveling Underlayment 10
 - Dry Pack Underlayment 11
 - Precast 12
 - Vertical Repair 13
 - Grouts 14
 - Specialty Mortars 16
 - Waterproofing 17
- High Performance Masonry** 18
 - High Performance Masonry 19
- Architectural Sealers** 21
 - Protective Sealers 22
 - Water Repellents 24
 - Vertical Sealers 26
 - Paver Sealers 27
- Construction Chemicals** 29
 - Curing & Sealing 30
 - Curing Agents 32
 - Cleaners & Dissolvers 34
 - Form Release Agents 36
 - Curing Aids 36
 - Hardening & Polishing 37
 - Slip Resistant Additives 37
 - Surface Retarders 38
 - Admixtures & Bonding 38
 - Shotcrete 40
- About TCC Materials** 41
- Product Index** 41
- Product Index** 42
- Product Index** 43



REPAIR & RESTORATION



**High Strength
Ultimate Performance
Superior Durability**



REPAIR & RESTORATION BY TENON



Tenon's Repair and Restoration line offers mortars and grout that meet specified engineering performance requirements. They are blended for superior performance and to successfully achieve the service life and sustainability requirements of your structure.



Click [here](#) to visit.

HORIZONTAL REPAIR

Repair, improve and restore



POURABLE CONCRETE PATCH

Tenon Pourable Concrete Patch is a cement-based, flowable, squeegee-grade, polymer-modified patching and resurfacing mix for interior and exterior horizontal concrete substrates. Easy to use, it corrects defects up to 1/2 in. (13 mm) on concrete surfaces prior to applying new flooring materials or coatings. Depending on application, can also be used as a wearable surface for residential and light duty commercial applications. Meets ASTM C387.



RAPID PATCH® 100

Tenon Rapid Patch 100 is a fast-setting, fiber-reinforced, high-strength, cement-based repair mortar designed for applications where high early strength gain is needed to reduce down time. Apply neat from 1/2 in. to 2 in. deep, can be extended for repairs greater than 2 in. deep.



RAPID PATCH® 200

Tenon Rapid Patch 200 is a rapid-setting, fiber reinforced, high-strength, polymer-modified cement mortar designed for concrete repair and overlay applications requiring high durability. Apply neat from 1/2 in. to 2 in. deep, or can be extended for repairs greater than 2 in. deep. Wide temperature range for application.



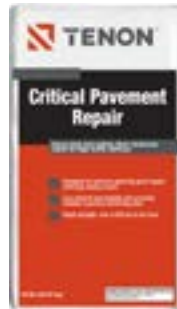
RAPID PATCH® COMMERCIAL DOT REPAIR

Tenon Rapid Patch Commercial DOT Repair is a rapid-setting, high-strength, polymer-modified, one-component hydraulic cement mortar designed for concrete repair and overlay applications requiring high durability. Meets or exceeds ASTM C928-R3. Resistant to salts, grease, oil, and other chemicals often found in the transportation environment. Rapid Patch Commercial DOT Repair is approved by MnDOT for "Rapid Hardening Materials for Repairs" and WYDOT for "Bridge Concrete Repair."



RAPID PATCH® COMMERCIAL DOT REPAIR EXTENDED

Tenon Rapid Patch Commercial DOT Repair Extended is a rapid-setting, high-strength, polymer-modified, one-component hydraulic cement mortar designed for concrete repair and overlay applications requiring high durability. Meets or exceeds ASTM C928-R3. Resistant to salts, grease, oil, and other chemicals often found in the transportation environment. Rapid Patch Commercial DOT Repair is approved by MnDOT for "Rapid Hardening Materials for Repairs" and WYDOT for "Bridge Concrete Repair."



RAPID PATCH® CRITICAL PAVEMENT REPAIR (CPR)

Tenon Critical Pavement Repair is a preblended, single-component, fast-setting, high-strength, polymer-modified, fiber reinforced repair mortar designed to be a quick, durable repair for essential heavy-duty surfaces such as airport runways, concrete highways, parking structures, freezer rooms, loading docks, industrial floors, and much more. It is freeze-thaw durable and contains corrosion inhibitor to mitigate corrosion issues. It can be trowel applied on horizontal or vertical surfaces or pumped into place for formed vertical and overhead repairs. Meets ASTM C928.



RAPID PATCH® SELF-LEVELING RESURFACER

Tenon Rapid Patch Self-Leveling Resurfacer is a polymer-modified, cement-based product for resurfacing concrete floors with damaged finishes or as a wear surface for light industrial floors where a hard, flat, smooth surface and a quick return to service is desired. Also use as an underlayment for installation of ceramic tile, stone, resilient flooring, carpet, or other finished flooring. Typical substrates include fully cured concrete, APA rated exterior grade/exposure 1 plywood or OSB underlayment grade equivalent with expanded wire lath reinforcement. Install from feather edge to 1 in. (25 mm) thick.



SELF-CONSOLIDATING CONCRETE MIX CI

Tenon Self-Consolidating Concrete Mix CI is a dry, preblended, one-component, self-consolidating, cementitious, polymer-modified concrete mix containing coarse aggregate, silica fume, and an integral migrating corrosion inhibitor. Designed for application thickness minimum of 1 in. (2.5 cm) and maximum thickness of 8 in. (20 cm).



RAPID STRENGTH CONCRETE MIX SE

Tenon Rapid Strength Concrete Mix SE is a commercial grade blend of fast-setting cement, sand, gravel, and other proprietary performance additives designed to provide extended working time and high early strength for concrete applications requiring a minimum thickness of 1.5 in. (38 mm). Air-entrained for improved workability and freeze-thaw resistance, this mix is performance enhanced with corrosion inhibitors and contains fibers for crack resistance and increased toughness.

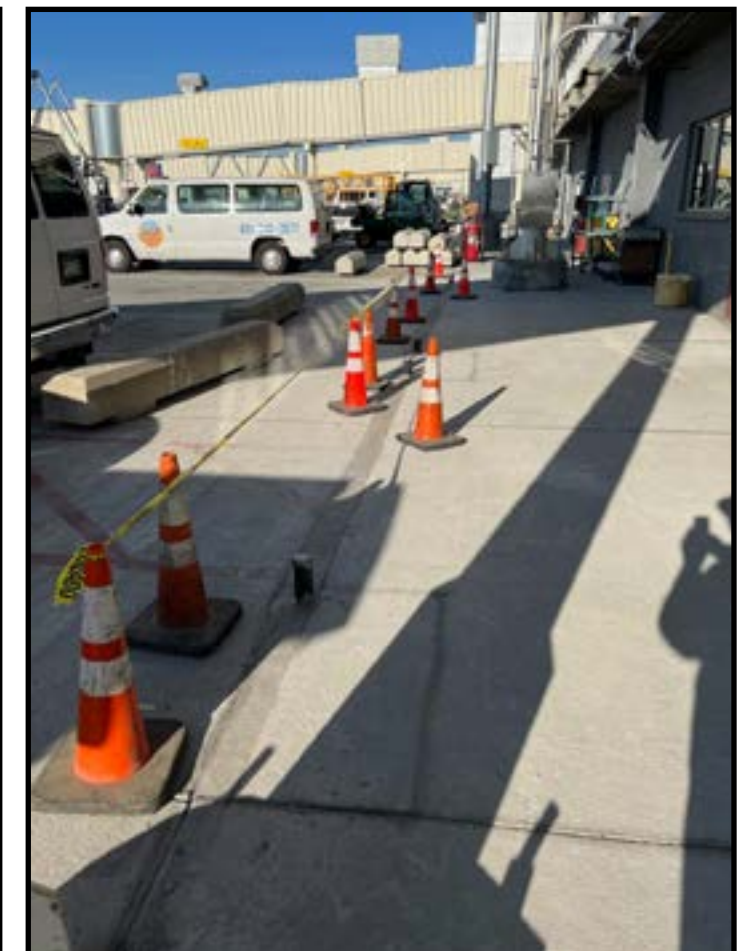
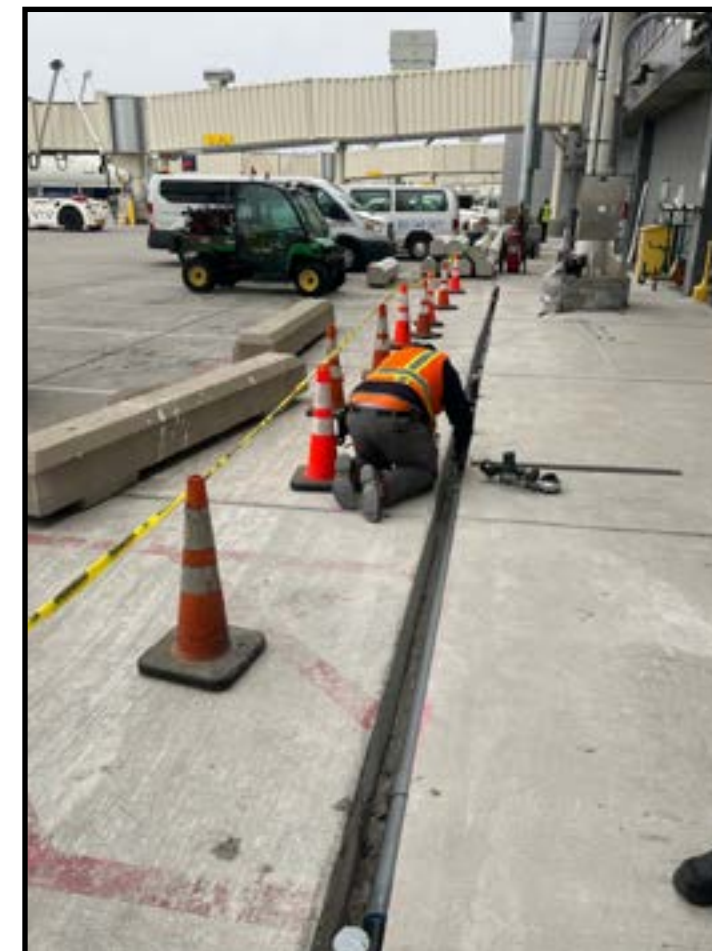


PROJECT SPOTLIGHT • MINNEAPOLIS-ST. PAUL AIRPORT, ST. PAUL, MN CRITICAL PAVEMENT REPAIR (CPR)

Often when traveling through an international airport, it seems construction projects are everywhere. The same is true at the Minneapolis-St. Paul International Airport in St. Paul, Minnesota. A project in the fall of 2022 utilized the Tenon Critical Pavement Repair (CPR) for pavement repair on a ramp that connects to one of the runways. The Minneapolis-St. Paul International Airport is run by the Metropolitan Airport Commission (MAC) and covers 3,400 acres and services 20 million passengers along with 450,000 aircraft annually. The construction project was part of the approved projects that the MAC included in their 2020-2025 expansion plan. This plan includes improvements to security, terminals, runways, parking ramps, deicing pads, and a transit center.

Tenon CPR was on one of these projects in a high-use area to repair an electrical conduit. CPR is perfect for this application as it offers a 15-25 minute initial set time and a final set time of 20-30 minutes. This allows the repaired area to be put back in service in a very short period of time. This application was a trench that was 12 inches deep and 100 feet long in a high traffic area between one of the terminal buildings and the ramp/taxi way to the runways.

Installation requires the adjoining surfaces to be of sound repair, clean, and free of loose or damaged concrete. This application required installation in 4" lifts due to the depth of the trench. The project was ultimately deemed a success!





VINYL CONCRETE PATCH

Tenon Vinyl Concrete Patch is a polymer-modified, cement-based patching compound used to repair minor surface imperfections in concrete. Suitable for interior and exterior applications from feather edge to 2 in. (51 mm) thick per lift. Typically supports foot traffic in 8-12 hours, wheeled traffic in 48 hours.



METRO MIX™

Tenon Metro Mix™ is a high-performance concrete mix engineered to meet commercial/industrial ready mix specifications. Super plasticized for higher slump and compressive strengths with corrosion inhibitors. Ideal for projects requiring small structural concrete applications or when ready mix truck access is restricted. Use for structural applications and full depth repairs of 2 in. (51 mm) or greater. Exceeds ASTM C387.



METRO MIX™ AE

Tenon Metro Mix AE is the air-entrained version of our high performance concrete mix engineered to meet commercial/industrial ready mix specifications. Super plasticized for higher slump and compressive strengths with corrosion inhibitors. Ideal for projects requiring small structural concrete applications or when ready mix truck access is restricted. Use for structural applications and full depth repairs of 1½ in. (51 mm) or greater. Exceeds ASTM C387.



CONCRETE PATCHING MIX AE (3U58M)

Tenon Concrete Patching Mix AE (3U58M) is an ideal material for repairing concrete pavement, bridge decks, industrial floors, concrete parking lots, and garage decks. This preblended mixture of cement, aggregate, and special additives will produce a high-strength concrete repair material that is extremely durable and works well in harsh environments. Additionally, when used with Tenon Fast-Set Liquid Activator, surfaces can be reopened to traffic within 4 to 5 hours under typical conditions.



CONCRETE PATCHING MIX (3U18)

Tenon Concrete Patching Mix (3U18) is a dry mixed combination of cement and aggregates that is proportioned and manufactured according to MnDOT specification 3105 for grade 3U18. When mixed according to specifications with water and admixtures, it is an ideal mixture for repairing concrete pavement, industrial floors, and structural concrete.



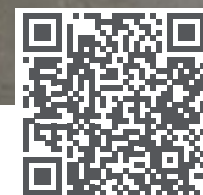
CONCRETE RESURFACER

Tenon Concrete Resurfacer is a fast-setting, high-performance polymer-modified, cement-based product used for resurfacing old concrete to make it look new again. Applications from feather edge to ½ in. (2-13 mm). Fast-drying, walkable on average in 2 hours.



PARTIAL DEPTH CONCRETE PATCH

Tenon Partial Depth Concrete Patch is ideal for placing overlays less than 2 in. deep (5 cm). This preblended cement and oven dried sand mixture will produce a high-strength concrete repair material that is extremely durable in partial depth applications such as concrete pavements, bridge decks, industrial floors, concrete parking lots and garage decks. It is also used for adhering pavers to concrete steps and walkways, patching and/or leveling concrete surfaces, filling large cracks, and filling cores in masonry block or brick. Available in 2:1 mix, 2.5:1 mix, or 3:1 mix.



Click [here](#) to visit.

ANCHORING
Bolts, posts and railings

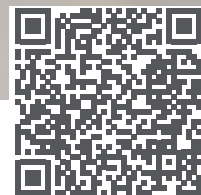


INSTANT ANCHORING CEMENT

Tenon Instant Anchoring Cement is a quick-setting, anchoring cement compound used for setting poles, railings, bolts, and fixtures in concrete or masonry. Suitable for interior or exterior use. Expands as it hardens to set securely and lock in place for strong support. Any metals that will corrode when exposed to wet cement, such as aluminum, must be protected.

SELF-LEVELING UNDERLAYMENT

Preparing, repairing and leveling



Click [here](#) to visit.



LEVEL-FLO® 100

Tenon Level-Flo 100 is a cement-based, self-leveling underlayment used to level and smooth interior floors for finished floor covering installation. Can be applied from 1/8 in.-1 1/2" in. (3-38 mm) neat and up to 5 in. (127 mm) extended. Accepts non-moisture sensitive tile and stone in as little as 24 hours, and moisture sensitive floor coverings in 3 days. Use with Level-Flo Primer Pro to level and smooth over many interior substrates including concrete, existing ceramic tile, non-water soluble adhesive residue, and solid wood floors.



LEVEL-FLO® 200

Tenon Level-Flo 200 is a high-performance, fiber-reinforced, non-gypsum based, self-leveling underlayment that provides a flat, extremely smooth, durable surface for finished floor covering installation. Can be applied from 1/8 in.-2 in. (3-51mm) neat, and up to 5 in. (127 mm) extended. Fast-setting, accepts non-moisture sensitive tile and stone in as little as 4 hours, and moisture sensitive floor coverings in 16-24 hours. Use with Level-Flo Primer Pro to level and smooth over many interior substrates including concrete, existing ceramic tile, non-water soluble adhesive residue, and solid wood floors.



LEVEL-FLO® 300

Tenon Level-Flo 300 is a high-performance, high-strength, fiber-reinforced, non-gypsum based, self-leveling underlayment that provides a flat, extremely smooth, durable surface for finished floor covering installation. It's designed for maximum flow and seamless merging with every pour and is ideal for fast track applications.



RAPID PATCH® SELF-LEVELING RESURFACER

Tenon Rapid Patch Self-Leveling Resurfacer is a polymer-modified, cement-based product for resurfacing concrete floors with damaged finishes or as a wear surface for light industrial floors where a hard, flat smooth surface and a quick return to service is desired. Also use as an underlayment for installation of ceramic tile, stone, resilient flooring, carpet, or other finished flooring. Typical substrates include: fully cured concrete, APA rated exterior grade/exposure 1 plywood or OSB underlayment grade equivalent with expanded wire lath reinforcement. Install from feather edge to 1 in. (25 mm) thick.



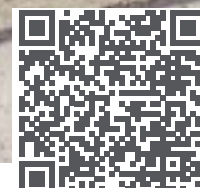
FEATHER EDGE PRO

Tenon Feather Edge Pro is a trowelable, rapid-setting, polymer-modified, self-drying, cement-based patch and skim coating compound for multiple interior substrates. Specially formulated with superior workability for easy application, this non-sanded product results in an ultra-smooth finish and can be applied from feather-edge to 1/2 in. (13 mm) and is ideal for use as an embossing leveler. Fast-setting, with initial set in 15 minutes, it can accept ceramic tile and stone applications, as well as moisture-sensitive floor coverings, in as little as 30 minutes or when completely dry.



FEATHER PATCH PRO

Tenon Feather Patch Pro is a fast-setting, polymer-modified, self-drying, cement-based patch and skim coating compound for interior use under ceramic tile, hardwood flooring, carpet and a wide array of floor coverings. Ideal for deeper patching, this product can be applied from feather edge to 2 in. (51 mm) thick. Formulated for exceptional bond strength and superior workability, it can be applied to concrete with a relative humidity (RH) up to 90%. Rapid-setting, with initial set in 15 minutes, it can accept ceramic tile and stone applications, as well as moisture-sensitive floor coverings, in as little as 30 minutes or when completely dry.



Click [here](#) to visit.

DRY PACK UNDERLAYMENT

Sub-bases for tile projects



TILE CRETE® FLOOR MUD

Tenon Tile Crete Floor Mud is a blend of cementitious materials and oven dried sand developed to produce a water resistant and highly bondable substrate. Available in fine, coarse, and 50/50 mix, Tile Crete is preblended and manufactured to optimize consistency. Use as a setting bed/underlayment for ceramic, mosaic, quarry, and paver tile over concrete or wood sub-floors. It is also the ideal product for forming shower pans, curbs as well as installations requiring a slope to drain. Tile Crete Floor Mud also offers specialty mixes including a blend for exterior floor underlayment, fast-setting floor underlayment, fast-setting with fine sand floor underlayment.



TILE CRETE® FLOOR MUD PM

Tile Crete PM is the polymer-modified version of Tile Crete Floor Mud. The addition of a special blend of polymers allows you to produce a highly bondable substrate and optimizes consistency between batches. The integral polymer eliminates the need for a polymer additive during mixing. Excellent for freeze-thaw durability, enhanced bond, and excellent workability.

PRECAST CONCRETE

Patching, repair and appearance



Click [here](#) to visit.



Click [here](#) to visit.

VERTICAL REPAIR

Repair, improve and restore



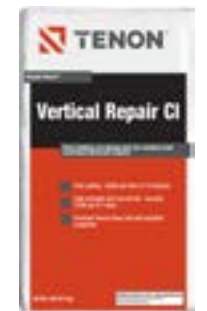
BLEND-PRO™

Tenon Blend-Pro is a fast-setting, one component, polymer-modified, calcium aluminate cement-based concrete and masonry patching compound designed for vertical and overhead repair applications.



RUB-PRO™

Tenon Rub-Pro is a one-component, polymer-modified, cement-based, interior and exterior resurfacer designed for smoothing and filling vertical and overhead concrete and masonry surfaces.



RAPID PATCH® VERTICAL REPAIR CI

Tenon Rapid Patch Vertical Repair CI is a polymer modified, high-strength, fast-setting, non-shrink, patching material for commercial and industrial, vertical and overhead holes in concrete or masonry. Can be shaved or molded to required shapes.



VERTICAL CONCRETE SURFACE FINISHER

Tenon Vertical Concrete Surface Finisher is a superior cementitious waterproofing coating for concrete and masonry. It provides a protective and waterproof surface while eliminating the rubbing process. Spray or brush applied. For added performance, durability, and improved bonding, Vertical Concrete Surface Finisher is designed to be mixed with Tenon Mighty Bond liquid additive. Vertical Concrete Surface Finisher when mixed with Mighty Bond is approved by MnDOT under Special Surface Finish System.



VERTICAL CONCRETE SURFACE FINISHER

Tenon Vertical Concrete Surface Finisher is a superior cementitious waterproofing coating for concrete and masonry. It provides a protective and waterproof surface while eliminating the rubbing process. Spray or brush applied. For added performance, durability, and improved bonding, Vertical Concrete Surface Finisher is designed to be mixed with Tenon Mighty Bond liquid additive. Vertical Concrete Surface Finisher when mixed with Mighty Bond is approved by MnDOT under Special Surface Finish System.



RAPID PATCH® VERTICAL REPAIR CI

Tenon Rapid Patch Vertical Repair CI is a polymer modified, high-strength, fast-setting, non-shrink, patching material for commercial and industrial, vertical and overhead holes in concrete or masonry. Can be shaved or molded to required shapes.



SURFACE BONDING CEMENT CR

Tenon Surface Bonding Cement CR is a versatile fiber-reinforced, cement-based product used to build and restore retaining walls or block walls, patch large vertical holes where non-sagging cement is a must, repair deteriorated stucco, and in the construction of concrete block walls that are dry stacked (without mortar) above the first course. Special fibers control shrinkage, cracking, and sagging on vertical applications as well as provide additional overall strength when compared with conventional concrete. Available in white and gray.



VINYL CONCRETE PATCH

Tenon Vinyl Concrete Patch a polymer-modified, cement-based patching compound used to repair minor surface imperfections in concrete. Suitable for interior and exterior applications from feather-edge to 2 in. (51 mm) thick per lift. Typically supports foot traffic in 8-12 hours, wheeled traffic in 48 hours.

GROUTS

Engineered for superior reinforcement



Click [here](#) to visit.



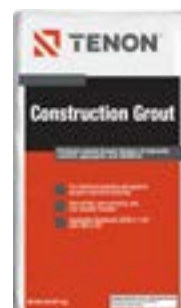
ULTRA HIGH STRENGTH PRECISION GROUT

Tenon Ultra High Strength Precision Grout is a uniquely formulated cementitious, flowable precision grout. It is designed for extreme duty applications where high early strength and extremely high finish strengths are required.



HIGH STRENGTH PRECISION GROUT

Tenon High Strength Precision Grout is a ready-to-use, high-strength, flowable precision grout mix with excellent working time and early strength ensuring quick job startups and reducing cost. High Strength Precision Grout is a non-shrink, non-metallic, non-staining, non-porous, high-density, pumpable formula designed for precision grouting applications and can be extended with the proper aggregates up to 50%



CONSTRUCTION GROUT

Tenon Construction Grout is a non-shrink, non-metallic, cement based mixture of hydraulic cement, aggregate, and additives for general purpose structural grouting. Meets or exceeds ASTM C1107.



RAPID STRENGTH CONSTRUCTION GROUT LT

Tenon Rapid Strength Construction Grout LT is a uniquely formulated non-corrosive, cementitious, flowable construction grout. It is designed for extreme duty applications where early, fast-setting strengths at low temperatures are required.



THERMASEAL® GEOTHERMAL GROUT

Tenon Thermaseal Geothermal Grout is a thermally-conductive, cementitious grout engineered for application of vertical and horizontal ground source heat pumps and geothermal well fields. Non-toxic and non-shrink with a high solids content and a low-permeability factor make it ideal for ground source heat loops and safe for contact with potable ground water. A blend of thermally-conductive sand with cement for a range of thermal conductivities depending on design requirements.



PROJECT SPOTLIGHT • JOHNSON HIGH SCHOOL, ST. PAUL, MN

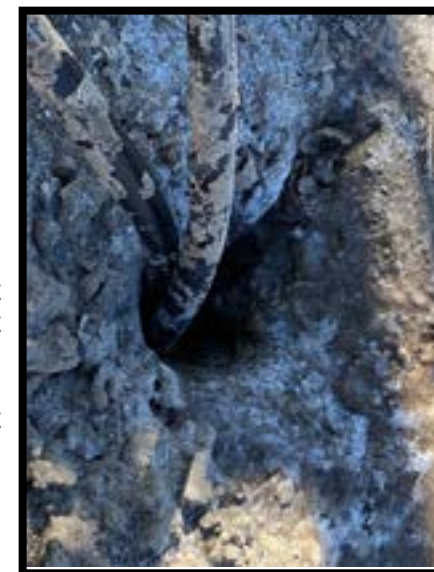
THERMASEAL® GEOTHERMAL GROUT

In the heart of the Payne-Phalen neighborhood in St. Paul stands Johnson Senior High School. Established in 1897, it sits in a densely populated neighborhood near the core of the city making it a candidate for a geothermal well field when it needed a new heating, cooling, and humidity control system. TCC Materials manufactures a geothermal grout that meets the Minnesota Department of Health's stringent rules – meaning it is safe for contact with potable ground water.

Geothermal grout is a thermally conductive cementitious grout that offers low absorption to prevent contamination and mixing with the groundwater aquifers that are a critical component of geothermal heating and cooling systems. Depending on the size, geothermal systems can consist of dozens of wells in which geothermal grout is installed. A geothermal system consists of three parts:

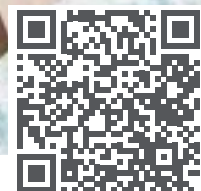
- Ground loop – piping system and the wells.
- Heat pump/exchanger – moves warm/cold water between the building and the wells
- Distribution system – duct work inside the building

The geothermal system works because the fluid in the system absorbs the heat from the surrounding earth. This fluid is pumped in pipes to the heat pump located in the building. On the heat pump is a heat exchanger that uses the energy to warm the air that passes through the unit. The heated air circulates through the duct work in the building. To cool the building, the heat exchanger extracts the heat from the air. The heat pump moves the hot fluid back into the ground to be cooled and then brings the cool water into the system to cool the building.



SPECIALTY MORTARS

Specialty mortars for projects big and small



Click [here](#) to visit.



Click [here](#) to visit.

WATERPROOFING

Built to resist water penetration inside and out



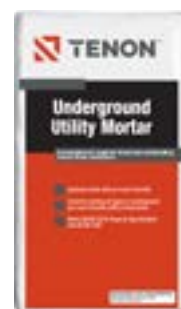
REFRACTORY MORTAR

Tenon Refractory Mortar is a specially-engineered blend of specific cements and aggregates giving the mortar unique heat-resistance and thermal characteristics for use in high-temperature applications such as inside fire pit rings, setting chimney clay flue liners, parging a smoke chimney chamber, and setting fire bricks.



SURFACE BONDING CEMENT CR

Tenon Surface Bonding Cement CR is a versatile, fiber-reinforced, cement-based product used to build and restore retaining walls or block walls, patch large vertical holes where non-sagging cement is a must, repair deteriorated stucco, and in the construction of concrete block walls that are dry stacked (without mortar) above the first course. Special fibers control shrinkage, cracking, and sagging on vertical applications and provides additional overall strength when compared with conventional concrete. Available in white and gray.



UNDERGROUND UTILITY MORTAR

Tenon Underground Utility Mortar is a dry, preblended, air-entrained mortar mix containing cement, hydrated lime, and dried masonry sand formulated for superior bond and outstanding freeze-thaw resistance in all underground precast concrete structure applications.



INSTANT HYDRAULIC CEMENT

Tenon Instant Hydraulic Cement is a quick-setting hydraulic cement compound used primarily as a water stop or hole filler. It expands when set and locks into place to block flowing water in 3 to 5 minutes. For use only on concrete and masonry materials. Best for repairing leaks in cracks between blocks or on one surface, not for stopping water flow in corners.

ASTM STANDARDS

REFRACTORY MORTAR

Passes [ASTM C199](#) for mortar temperature limits to 2,550°F for a minimum of 6 hours.

UNDERGROUND UTILITY MORTAR

Passes [ASTM C270](#) for construction of non-reinforced and reinforced unit masonry structures.

Passes [ASTM C1714](#) for masonry mortars that are preblended and governed by ASTM C270.



WATERPROOFING & CRACK ISOLATION MEMBRANE

Tenon Waterproofing & Crack Isolation Membrane is an advanced latex polymer-based technology used as a professional grade waterproofing underlayment membrane or as part of a crack isolation system. Salmon color when applied, dries to dark orange.



ASTM International has over 12,000 ASTM standards that help ensure product quality. These standards cover a broad range of industries and categories that help ensure the health and safety of projects and products worldwide. TCC Materials is proud to have a number of their Tenon products certified through ASTM International!



HIGH PERFORMANCE MASONRY

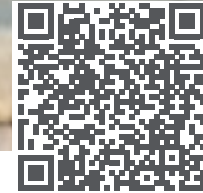
Saves Labor & Time
Adhesive Technology
Versatile



HIGH PERFORMANCE MASONRY BY TENON



Tenon's High Performance Masonry products combine technology and chemistry to meet your demanding needs. They are designed to save you labor while meeting your project requirements.



Click [here](#) to visit.

HIGH PERFORMANCE MASONRY

Stone, brick and veneers



MASONRY VENEER MORTAR HB

Tenon Masonry Veneer Mortar HB (High Bond) is a high-performance, non-sag, fiber-reinforced, polymer-modified bonding mortar for installing real or manufactured masonry veneer units. Our Pro Veneer Technology (PVT) is a blend of cementitious materials, oven-dried sand, and special performance admixtures to create a professional strength mortar. This high-yield mortar allows for the same coverage as a traditional 50 lb. bag in a lighter-weight 40 lb. size. Meets or exceeds the requirements of ANSI A118.4, A118.11, A118.15 and ASTM C270.



MASONRY VENEER JOINT GROUT

Tenon Masonry Veneer Joint Grout is blend of dry, cementitious materials, performance admixtures, and dried sand specifically designed to fill or tuck-point the joints between artificial stone, brick, masonry, and natural stone in veneer systems. Preblended with air-entrainment admixtures to resist freeze-thaw conditions, while increasing flow and durability. Tenon Pro Veneer Technology (PVT) creates a high-performance professional grout, formulated for clean installation and flow properties to eliminate clogging when using a grout bag.



MASONRY VENEER MORTAR PM

Tenon Masonry Veneer Mortar PM (Polymer-Modified) is a high-performance, multipurpose, polymer-modified mortar, used for both traditional thick bed scratch and base coats and as the bonding mortar for installing real or manufactured masonry veneer units. A blend of cementitious materials, oven-dried sand, and special performance admixtures. It can also be used for grouting and dry stack where mortar joints are not used. Meets the requirements of ASTM C1714, ASTM C270, ANSI 118.4, and ACI 530 Shear Bond Standards.



WATERPROOFING & CRACK ISOLATION MEMBRANE

Tenon Waterproofing & Crack Isolation Membrane is an advanced latex polymer-based technology used as a professional grade waterproofing underlayment membrane or as part of a crack isolation system. Salmon color when applied, dries to dark orange.



PROJECT SPOTLIGHT • MISTER CAR WASH, EDEN PRAIRIE, MN
MASONRY VENEER MORTAR HB

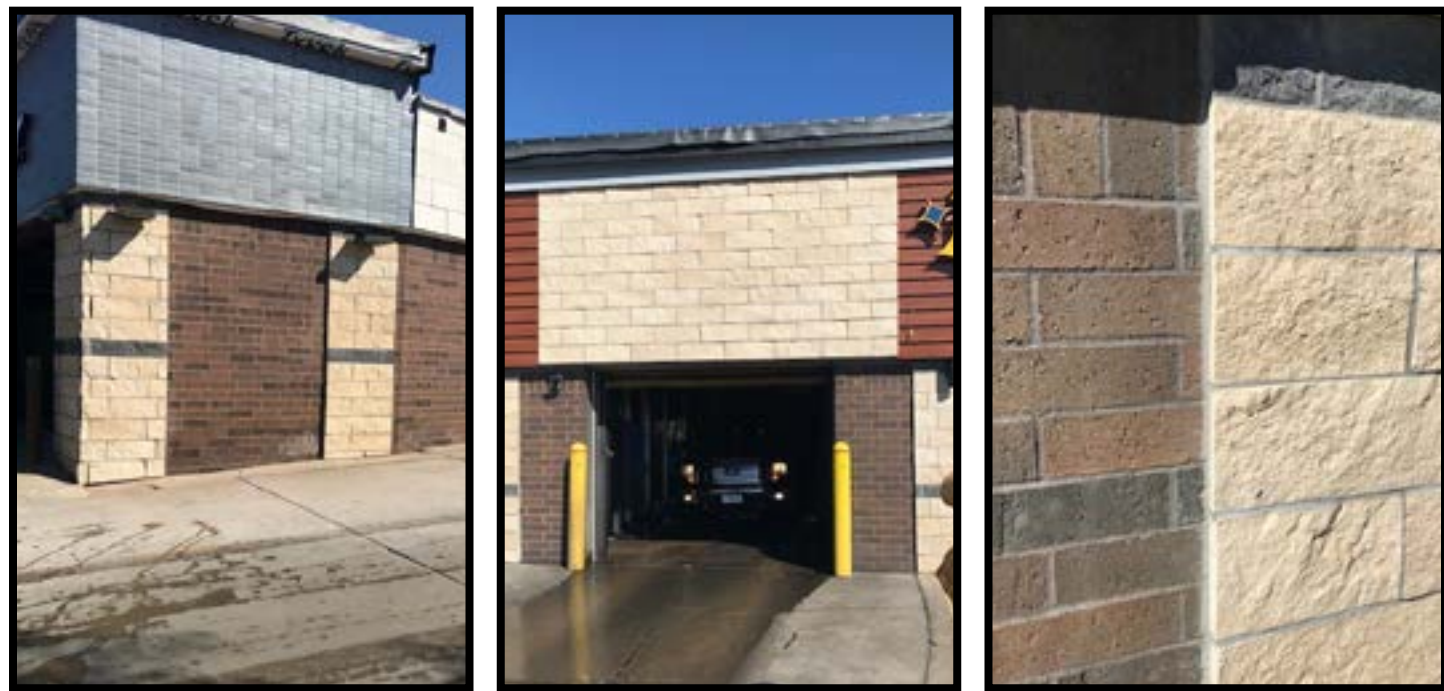
ARCHITECTURAL SEALERS



“We had a 700 sq. ft. residential thin veneer job utilizing a natural stone from Halquist Stone. This stone is cut extremely smooth on the back and is very dense, some of the pieces were 8” high and up to 36” long. We also had a traditional scratch coat applied to the walls and were struggling while trying to get anything to stick to the wall. After talking with TCC Materials, Alex came out to the job site with a bag of the Tenon High Bond and mixed it up for us. He explained how it was different from traditional mortars. To test it out, we grabbed the biggest stone we had and stuck it to the middle of the wall using the High Bond- and it didn’t move! We were able to get enough High Bond to finish the job and had no issues from then on. In the future we will be mindful, to look for any applications where this product could be used and start with it.”

- Eric Roussel, Project Manager/Foreman Randy Roussel Masonry

**Engineered Performance
 Aesthetically Enhancing
 Designed to Protect**



ARCHITECTURAL SEALERS BY TENON



Architectural Sealers

Tenon’s architectural sealers offer permeable and impermeable options for enhancing the aesthetics of your project. They are easy to use, and performance based to protect your investment.



PROTECTIVE SEALERS

Extend the life of concrete & masonry



Click [here](#) to visit.



SALT BARRIER

Tenon Salt Barrier is designed to protect and extend the life of concrete, masonry, pavers, retaining walls and other cementitious surfaces by protecting from the damaging effects of salt and deicing chemicals without affecting the finished look. Salt Barrier provides a natural finish that maintains the original appearance of driveways, patios, garage floors, block walls, and other concrete or masonry surface. This clear, solvent-based formula penetrates and reacts chemically within the capillaries of the concrete to protect against moisture penetration, spalling, freeze-thaw damage, deicing salts, efflorescence, and chemical erosion. It protects surfaces from most chemicals, dirt, acids, alkali, and airborne pollutants while making these surfaces easier to clean.



SALT BARRIER ES

Tenon Salt Barrier ES (Exempt Solvent) provides a natural finish that maintains the original appearance of driveways, patios, garage floors, block walls, and other concrete or masonry surfaces. This clear, solvent-based formula penetrates and reacts chemically within the capillaries of the concrete to protect against moisture penetration, spalling, freeze-thaw damage, deicing salts, efflorescence, and chemical erosion, protects surfaces from most chemicals, dirt, acids, alkali, and airborne pollutants while making these surfaces easier to clean.



SALT BARRIER WB

Tenon Salt Barrier WB provides a natural finish that maintains the original appearance of driveways, patios, garage floors, block walls, and other concrete or masonry surface. This clear, water-based formula penetrates and reacts chemically within the capillaries of the surface to protect against deicing salts, moisture penetration, spalling, freeze-thaw damage, efflorescence, and chemical erosion. Salt Barrier WB also protects surfaces from most chemicals, dirt, acids, alkali, and airborne pollutants while making these surfaces easier to clean.



PROJECT SPOTLIGHT • BURNSVILLE POLICE DEPT., BURNSVILLE, MN

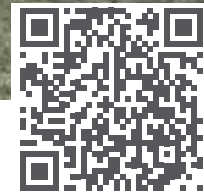
SALT BARRIER

The Burnsville Police Department in Burnsville, Minnesota had some updates made around their building in 2021. Using PaveDrain provided by Amcon Concrete Products, TCC Materials completed the job by sealing the PaveDrain pavers with Tenon Salt Barrier. Designed to extend the life of concrete in areas that suffer from the effects of damaging salts and deicing chemicals, Salt Barrier was the ideal product for the job. Salt Barrier leaves no residue behind and helps prevent efflorescence, erosion and spalling when applied. Ready for traffic in 2-4 hours, the police department saw minimal downtime during the application process.



WATER REPELLENTS

Deflect, protect and repel



Click [here](#) to visit.



20% SILANE SEALER

Tenon 20% Silane Sealer is a clear, solvent-based concrete sealer that penetrates deep into and reacts chemically within the capillaries of the concrete or masonry to protect against moisture penetration and the spalling, freeze damage, and rebar corrosion which moisture can cause. It is suitable for use to protect, and seal fully cured, new concrete, existing concrete, stucco, architectural concrete, and other cementitious materials. Silane sealers are used for above-grade exterior applications that are not subject to hydrostatic pressure.



40% SILANE SEALER

Tenon 40% Silane Sealer is a clear, solvent-based concrete sealer that penetrates deep into and reacts chemically within the capillaries of the concrete or masonry to protect against moisture penetration and the spalling, freeze damage, and rebar corrosion which moisture can cause. It is suitable for use to protect, and seal fully-cured concrete, existing concrete, stucco, architectural concrete, and other cementitious materials. It is used for above-grade exterior applications that are not subject to hydrostatic pressure.



40% SILANE SEALER WB

Tenon 40% Silane Sealer WB is a VOC compliant, clear, non-yellowing, concrete sealer that penetrates deeply and reacts chemically within the capillaries of the concrete or masonry to protect against moisture penetration and spalling, freeze damage, and rebar corrosion due to moisture interaction. It is suitable for use to protect, and seal fully cured, new concrete, existing concrete, stucco, architectural concrete, and other cementitious materials. Tenon® 40% Silane Sealer WB is designed for use above-grade exterior applications that are not subjected to hydrostatic pressure.



100% SILANE SEALER

Tenon 100% Silane Sealer is a clear, solvent-based, concrete sealer that penetrates deep into, and reacts chemically within the capillaries of the concrete or masonry in order to protect against moisture penetration and the spalling, freeze damage, and rebar corrosion which moisture can cause. It is suitable for use to protect and seal fully-cured concrete, cast in place, precast, and high-strength concrete materials. It is used for above-grade exterior applications that are not subject to hydrostatic pressure. It is excellent for treating high traffic areas or surfaces that receive high salt concentrations such as coastal piers.



CONCRETE & MASONRY SEALER WB

Tenon Concrete & Masonry Sealer WB is a water-based sealer that penetrates and reacts chemically within the capillaries of the concrete or masonry, bonding to the silica in the substrate to protect against moisture penetration, water related staining, atmospheric chemicals, and deterioration. It is used to protect and seal clean, dry, coating-free, fully cured concrete, brick, masonry, concrete masonry units, stucco, stone, terrazzo, architectural concrete, and some natural stones. Ready-to-use, this low VOC, silane/siloxane emulsion is especially suited for applications where VOC regulations for AIM coatings prevent the use of solvent-borne products.



SILOXANE FINAL SEAL

Tenon Siloxane Final Seal is an aromatic, solvent-based concrete sealer/water-repellent used to protect cementitious surfaces against the damage caused by water penetration. Can be applied to surfaces where a cure and seal coating was previously applied.



SILOXANE SEALER

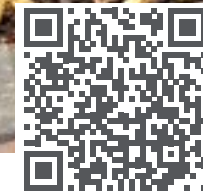
Tenon Siloxane Sealer is a clear, solvent-based sealer for concrete and cementitious materials. It penetrates and reacts chemically within the capillaries to repel water and protect from the damaging effects of rain, water penetration, chemicals, salt, freeze-thaw cycles, and smog. Provides natural looking, non-yellowing, invisible protection.

VERTICAL SEALERS

Decorative protection for vertical surfaces



Click [here](#) to visit.



Click [here](#) to visit.

PAVER SEALERS

Decorative protection for pavers



BURNISHED BLOCK SEALER

Tenon Burnished Block Sealer is used as a final sealer on masonry block walls including burnished block or ground face block, architectural block, brick, slate, paving stone, terrazzo, quarry tile, and cementitious materials. Burnished Block Sealer enhances beauty, giving the surface a rich “wet-look” sheen. Made with a blend of methacrylate polymers, this aromatic solvent-based coating does not yellow when exposed to the sun’s UV rays.



BURNISHED BLOCK SEALER WB

Tenon Burnished Block Sealer WB is used as a final sealer on masonry block walls including burnished block or ground face block, architectural block, brick, slate, paving stone, terrazzo, quarry tile, and cementitious materials. Burnished Block Sealer WB enhances beauty, giving the surface a rich “wet-look” sheen. Made with a material that does not yellow when exposed to the sun’s UV rays. Also available in matte finish.



BURNISHED BLOCK SEALER ES

Tenon Burnished Block Sealer ES is an exempt solvent sealer used as a final sealer on masonry block walls including burnish block or groundface block, architectural block, brick, slate, paving stone, terrazzo, quarry tile, and cementitious materials. It enhances the beauty, giving the surface a rich “wet-look” sheen. It forms a membrane to increase protection from damaging freeze-thaw cycles, deicing salts, efflorescence, and chemical erosion, protects surfaces from most chemicals, dirt, acids, alkali, oil, grease, foods, and airborne pollutants while making these surfaces easier to clean. Does not yellow when exposed to the sun’s UV rays.



PAVER GUARDIAN

Tenon Paver Guardian provides a natural finish that maintains the original look of pavers, concrete, architectural concrete, brick, natural stone, and other cementitious materials. This clear, solvent-based formula penetrates and reacts chemically within the capillaries of the concrete to protect against moisture penetration, spalling, freeze-thaw damage, deicing salts, efflorescence, and chemical erosion, protects surfaces from most chemicals, dirt, acids, alkali, and airborne pollutants while making these surfaces easier to clean.



PAVER GUARDIAN WB

Tenon Paver Guardian WB provides a natural finish that maintains the original look of pavers, concrete, architectural concrete, brick, natural stone, and other cementitious materials. This clear, waterborne formula penetrates and reacts chemically within the capillaries of the surface to protect against deicing salts, moisture penetration, spalling, freeze-thaw damage, efflorescence, and chemical erosion. It also protects surfaces from most chemicals, dirt, acids, alkali, and airborne pollutants while making these surfaces easier to clean.



PAVER SEAL & SHINE

Tenon Paver Seal & Shine is designed to protect and extend the life of installed pavers, while enhancing color and adding a gloss finish. Made with a blend of methacrylate polymers, this solvent-based coating does not yellow when exposed to the sun’s UV rays and can also be used as a final sealer on concrete, architectural concrete, brick, natural stone, and other cementitious materials. Paver Seal & Shine will enhance the beauty of pavers, colored or stamped concrete, or exposed aggregate by giving it a rich “wet-look” gloss.



PAVER SEAL & SHINE PRO WB

Tenon Paver Seal & Shine Pro WB is a penetrating, breathable, waterborne sealer designed to protect & extend the life of installed pavers, while enhancing the color and adding a “wet-look” gloss. Made with a durable acrylic that does not yellow when exposed to the sun’s UV rays, it penetrates deep in the capillaries of the paving stones for increased protection from damaging freeze-thaw cycles, deicing salts, efflorescence, and chemical erosion.



PAVER SEAL

Tenon Paver Seal is designed to protect & extend the life of installed pavers, while enhancing the color and adding a matte finish. Made with a blend of methacrylate polymers, this solvent-based coating does not yellow when exposed to the sun's UV rays and can also be used as a final sealer on concrete, architectural concrete, brick, natural tile, and other cementitious materials. Paver Seal will enhance the beauty of pavers, colored or stamped concrete, or exposed aggregate yet keep a matte finish.



PAVER SEAL PRO WB

Tenon Paver Seal Pro WB is a penetrating, breathable, waterborne sealer designed to protect & extend the life of installed pavers, while enhancing the color with a natural, non-gloss finish. Made with a durable polysiloxane that does not yellow when exposed to the sun's UV rays, it penetrates deep in the capillaries of the paving stones for increased protection from damaging freeze-thaw cycles, deicing salts, efflorescence, and chemical erosion.



PAVER SEAL ULTRA SHINE

Tenon Paver Seal Ultra Shine is a high solids, low-viscosity, sprayable sealing agent designed to protect & extend the life of installed pavers, while enhancing color and adding a high-gloss "wet look" finish. Made with a blend of 100% methacrylate polymers, this solvent-based coating does not yellow when exposed to the sun's UV rays and can also be used as a final sealer on architectural concrete, brick, natural stone, and other cementitious materials. Paver Seal Ultra Shine will enhance the beauty and vibrancy of colored or stamped concrete and exposed aggregate giving it a rich high-gloss finish.



PAVER WASH

Tenon Paver Wash is a mild, acidic product that dissolves and removes efflorescence (white mineral deposits) and rust stains from pavers and other cementitious or clay surfaces. This product is recommended to be used before applying a sealer to the surface of pavers in order to enable the sealer to penetrate and seal more effectively.



TRAXGRIP

Tenon TraxGrip gives a light texture to concrete flat work for a slip-resistant surface. Often used commercially on entrance floors, garage floors, steps, patios, walkways, and any surface where additional texture is desired to increase non-slip characteristics. TraxGrip is an optically clear thermoset polymer resin. Nearly invisible on the applied floor surface, it is added to curing and sealing compounds then applied to surfaces in the liquid solution.



CONSTRUCTION CHEMICALS

Enhanced Performance
Increased Durability
Application Efficiency



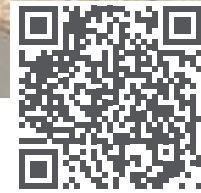
CONSTRUCTION CHEMICALS BY TENON



Tenon's line of Construction Chemicals includes cleaners, curing agents and admixtures that aid in achieving optimal performance for your construction project. They balance the need for aesthetic and performance.

CURING & SEALING

Cure, seal and protect



Click [here](#) to visit.



ULTIMATE BARRIER

Tenon Ultimate Barrier is a clear, non-yellowing, fast drying acrylic-silicone blended concrete sealer for curing, dust-proofing, and weatherproofing of freshly-placed and/or existing concrete, terrazzo, brick, stone, architectural concrete, and other cementitious materials. It reacts chemically within the capillaries of the concrete or masonry to protect against moisture penetration and the spalling, freeze damage, and rebar corrosion which moisture can cause. It is suitable for use to cure, protect, and seal fully cured, new concrete, existing concrete, stucco, architectural concrete, and other cementitious materials.



ULTIMATE BARRIER ES

Tenon® Ultimate Barrier ES is a VOC compliant, clear, non-yellowing, fast drying acrylic-silicone blended concrete sealer for curing, dustproofing, and weatherproofing of freshly-placed and/or existing concrete, terrazzo, brick, stone, architectural concrete, and other cementitious materials. It reacts chemically within the capillaries of the concrete or masonry to protect against moisture penetration and the spalling, freeze damage, and rebar corrosion which moisture can cause. It is suitable for use to cure, protect, and seal fully-cured, new concrete, existing concrete, stucco, architectural concrete, and other cementitious materials.



CURE & SEAL

Tenon Cure & Seal is a non-yellowing, fast-drying acrylic compound used for the curing, sealing, and hardening of freshly-placed and/or existing concrete. It enhances colors, darkens the appearance of concrete, brick, stone, terrazzo, and exposed aggregate. Cure & Seal benefits existing concrete by penetrating into the slab, binding together the small dusting particles, while filling the voids to produce a hard, dust-free, brighter surface. When used on terrazzo, brick, stone, and architectural concrete, it brings out highlights, enriches, and enhances the natural colors found in the material.



CURE & SEAL ES

Tenon Cure & Seal ES is a clear, non-yellowing, fast drying acrylic compound. It is used for the curing and sealing of freshly-placed and/or existing concrete, terrazzo, brick, stone, architectural concrete, and other cementitious materials. It forms a membrane film on new concrete to seal and retain hydration water, providing maximum hardness of the substrate, resistance to abrasion, and resistance to damage caused by salt, oil, grease, mild acids, alkali, and stains from soot, smog, fumes, and gases. When used on terrazzo, brick, stone, and architectural concrete, it brings out highlights, enriches, and enhances the natural colors found in the material.



CURE & SEAL WB

Tenon Cure & Seal WB is a clear, non-yellowing, acrylic polymer membrane forming compound used for curing, sealing, and hardening of freshly-placed and/or existing concrete, terrazzo, brick, stone, architectural concrete, and other cementitious materials. Waterborne mixture passes VOC compliance laws.



CURE & SEAL WB 1315

Tenon Cure & Seal WB 1315 is a film-forming compound used to cure, seal, and harden freshly placed concrete, terrazzo, brick, stone, architectural concrete, and other cementitious materials. It will pass all VOC compliance laws. Designed for both exterior and interior applications, it is particularly recommended for indoor work in public buildings (hospitals, restaurants) and private residences where solvent-based systems are difficult to use. The white solution dries clear. This product provides maximum hardness to the concrete as well as resistance to traffic abrasion. Construction debris are easier to clean. Compatible with most tile and carpet adhesives.

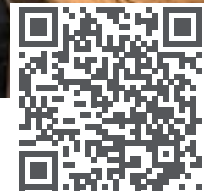
PROJECT SPOTLIGHT • METCON CONSTRUCTION, FAIRBAULT, MN

ULTIMATE BARRIER

Tenon Ultimate Barrier was used for a project in Faribault, Minnesota in the summer of 2022. A freshly poured concrete slab was coated with Tenon Ultimate Barrier to cure and seal the concrete all at one time. The Ultimate Barrier was selected because the applicator (Metcon Construction) wanted to try a new product where they didn't have to come back to apply a penetrating sealer 28 days later. Saving them time and money.

CURING AGENTS

Enhances curing and durability



Click [here](#) to visit.



WAX CURE 309 WB

Tenon Wax Cure 309 WB is a water-based, white pigmented, liquid membrane forming, wax curing compound used for moisture retention of freshly placed concrete. It is formulated for curing concrete. The addition of white pigment to the wax film reflects the heat of the sun to protect excess heat build-up. Designed for exterior applications, it is particularly recommended for slip form, curb and gutter, and municipal sidewalk applications where minimum moisture retention is required. Tenon Wax Cure 309 WB will pass all VOC compliance laws.



WAX CURE 1315 WB

Tenon Wax Cure 1315 WB is a water-based, white pigmented, liquid membrane forming, wax curing compound used for moisture retention of freshly placed concrete. Tenon Wax Cure 1315 WB is formulated for curing concrete. The addition of white pigment to the wax film reflects the heat of the sun to protect excess heat build-up. Designed for exterior applications, it is particularly recommended for roadways, airport runways, parking lots, and other pavement projects where greater moisture retention is required. Tenon Wax Cure 1315 WB will pass all VOC compliance laws.



DISSIPATING CURE 1315 WB

Tenon Dissipating Cure 1315 WB is a water-based, clear resin, liquid membrane forming, curing compound used for moisture retention of freshly placed concrete. It is formulated for curing concrete. Designed for interior or exterior applications where a dissipating or easily removable curing compound is required. It is particularly recommended for applications where greater moisture retention is required. Tenon Dissipating Cure 1315 WB will pass all VOC compliance laws.



DISSIPATING CURE WB +PLUS

Tenon® Dissipating Cure WB +PLUS is a water-based, clear resin, liquid membrane forming, curing compound with silane used for moisture retention of freshly placed concrete. Designed for interior or exterior applications where a dissipating or easily removed curing compound is required. It is particularly recommended for applications where greater moisture retention is required. Tenon® Dissipating Cure WB +PLUS will pass all VOC compliance laws.



CURE & SEAL WB 1315

Tenon Cure & Seal WB 1315 is a film-forming compound used to cure, seal, and harden freshly placed concrete, terrazzo, brick, stone, architectural concrete, and other cementitious materials. It will pass all VOC compliance laws. Designed for both exterior and interior applications, it is particularly recommended for indoor work in public buildings (hospitals, restaurants) and private residences where solvent-based systems are difficult to use. The white solution dries clear. This product provides maximum hardness to the concrete as well as resistance to traffic abrasion. Construction debris are easier to clean. Compatible with most tile and carpet adhesives.



SUPER CLEAR COAT

Tenon Super Clear Coat is used for curing and sealing exposed aggregate and sealing colored concrete. This aromatic, solvent-based coating does not yellow when exposed to the sun's UV rays and can also be used as a final sealer on burnish block, architectural concrete, brick, slate, paving stone, terrazzo, quarry tile, and cementitious materials. Enhances the colors of the surfaces with a rich "wet-look" sheen.



SUPER CLEAR COAT MATTE

Tenon Super Clear Coat Matte is used for curing and sealing exposed aggregate and sealing colored concrete. This aromatic, solvent-based sealer does not yellow under the sun's UV rays. It enhances the beauty of colored or stamped concrete and exposed aggregate yet keeps a matte, low gloss finish.



SUPER DIAMOND GLAZE

Tenon Super Diamond Glaze is a higher viscosity version of Super Clear Coat and is used for curing and sealing exposed aggregate as well as sealing colored concrete. Enhances the beauty and depth of the surface, giving it a rich "wet-look" high gloss while protecting from the damages caused by moisture penetration.

CLEANERS & DISSOLVERS

Clean hardened materials



Click [here](#) to visit.



CONCRETE & MASONRY DISSOLVER

Tenon Concrete and Masonry Dissolver is an environmentally-friendly, liquid alternative to aggressive acid concrete removers. Use to safely dissolve and remove cured concrete, mortar, grout, and stucco build-up from tools, concrete forms, job mixers, hardware, shoring, and more.



CONCRETE & MORTAR DISSOLVER RM

Tenon Concrete and Mortar Dissolver RM is an environmentally-friendly, liquid alternative to aggressive acid based concrete removers. It is specifically designed for use in the ready-mix industry to clean equipment while the concrete and mortar are still in their plastic state. This product will retard the set time and prevent the cementitious bonds from forming, allowing the material to be easily washed from the equipment and tools.



RESTORATION CLEANER

Tenon Restoration Cleaner is a mild, acidic product that dissolves and removes efflorescence and rust stains from concrete and masonry surfaces. It is recommended to be used before applying a sealer to the surface of finished concrete or masonry applications. This enables the sealer to penetrate and seal more effectively. Restoration Cleaner may be used to prepare the surface of concrete or masonry prior to using Tenon repair products.



XYLENE

Tenon Xylene is a cleaning solvent for cleaning tools, sprayers, and equipment used in concrete and masonry construction. Tenon Xylene may also be used to soften previously applied acrylic sealers.

PROJECT SPOTLIGHT · CEMSTONE, ROSEMOUNT, MN

CONCRETE & MORTAR DISSOLVER RM

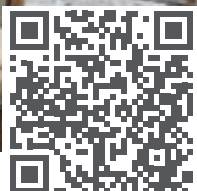


Cemstone has hundreds of trucks that operate everyday! Inevitably, these trucks need to be cleaned to keep them functioning and looking their best. Therefore, they use Concrete & Mortar Dissolver RM as part of their cleaning process. Tenon Concrete & Mortar Dissolver RM is specifically designed for use in the ready-mix industry to clean equipment while the concrete and mortar are still in their plastic state. These factors make it a great option for Cemstone's regular maintenance routine!



FORM RELEASE AGENTS

Release concrete from forms

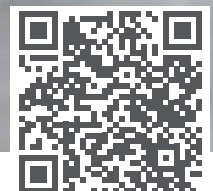


Click [here](#) to visit.



HARDENING & POLISHING

Create durable surfaces



Click [here](#) to visit.



FORMGUARD

Tenon FormGuard is a V.O.C. compliant, ready-to-use, petroleum based, chemically reactive liquid concrete form release agent. Tenon FormGuard effectively prevents bonding of concrete to forms and form liners. Use of Tenon FormGuard regularly increases the life of all forms. It can be used on forms such as steel, aluminum, fiberglass-reinforced, all grades of plywood, epoxy-coated, and urethane-coated.



FORMGUARD CITRUS

Tenon FormGuard Citrus is a V.O.C. compliant, ready-to-use, petroleum based, chemically reactive liquid concrete form release agent. Tenon FormGuard Citrus effectively prevents bonding of concrete to forms and form liners. Use of Tenon FormGuard Citrus regularly increases the life of all forms. Tenon FormGuard Citrus can be used on forms such as steel, aluminum, fiberglass-reinforced, all grades of plywood, epoxy-coated, and urethane-coated.



CURE & HARDEN

Tenon Cure & Harden is a clear, water-based silicate-based, curing, hardening, and dust-proofing concrete sealer. It penetrates into and reacts chemically within the capillaries of the concrete or masonry surfaces. It is suitable for use on freshly placed and finished concrete and in the renovation of aged concrete.



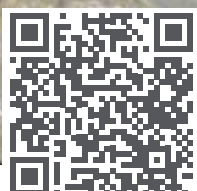
HARDENER LS

Tenon Hardener LS is a clear, water-based Lithium Silicate-based hardening, and dust-proofing concrete sealer. It deeply penetrates into the concrete surface and reacts chemically within the capillaries of the concrete surfaces. The reaction forms a dense calcium silicate hydrate crystalline structure, providing a hard durable surface. It is suitable for use on recently finished concrete and in the renovation of aged concrete greater than 10 days old.



CURING AIDS

Cure freshly placed surfaces

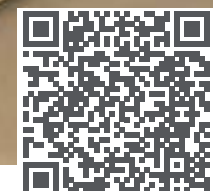


Click [here](#) to visit.



SLIP RESISTANT ADDITIVES

Prevent accidents and slippage



Click [here](#) to visit.



CURE & HARDEN

Tenon Cure & Harden is a clear, water-based silicate-based curing, hardening, and dust-proofing concrete sealer. It penetrates into and reacts chemically within the capillaries of the concrete or masonry surfaces. It is suitable for use on freshly placed and finished concrete and in the renovation of aged concrete.



TRAXGRIP

Tenon TraxGrip gives a light texture to concrete flat work for a slip-resistant surface. Often used commercially on entrance floors, garage floors, steps, patios, walkways, and any surface where additional texture is desired to increase non-slip characteristics. TraxGrip is an optically clear thermoset polymer resin. Nearly invisible on the applied floor surface, it is added to curing and sealing compounds then applied to surfaces in the liquid solution.



SURFACE RETARDERS

Achieve aggregate finishes

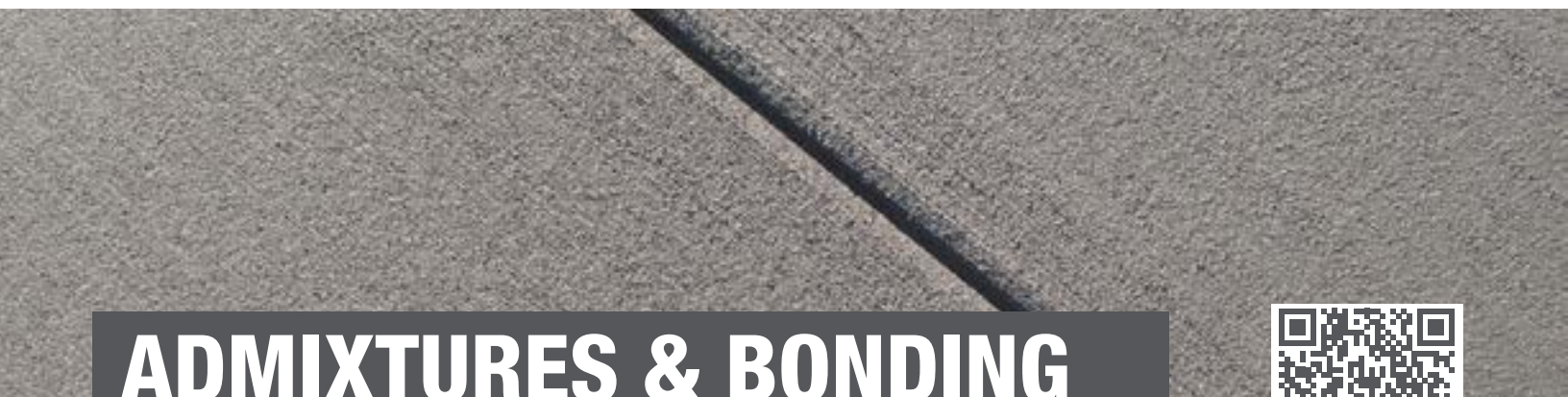


Click [here](#) to visit.



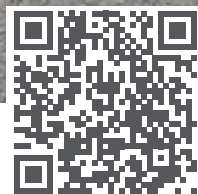
CONCRETE SURFACE RETARDER

Tenon Concrete Surface Retarder is a water-based, "Formula S" mixture that is applied to freshly placed concrete applications to chemically delay the setting of the mortar at the surface of the concrete. This allows the top layer of cement paste to be flushed away, creating an exposed aggregate decorative finish without damaging the integrity of the concrete slab. A stream of water or scrubbing with a stiff brush is used to create the decorative texture.



ADMIXTURES & BONDING

Efficient admixtures and bonding additives



Click [here](#) to visit.



SET RETARDER

Tenon Set Retarder is a ready-to-use liquid admixture that slows the rate of reaction for rapid setting concrete repair products. It is intended for use with these products in conditions where warm weather or other situations require extended working time for proper placement and finishing. It meets ASTM C494/C494M requirements for Type B retarding admixtures.



FAST-SET LIQUID ACTIVATOR

Tenon Fast-Set Liquid Activator is formulated specifically to be used in conjunction with Tenon Air-Entrained Concrete Patching Mix AE in order to establish a quicker set and develop strength rapidly. When used with the patching mix, Fast-Set Liquid Activator reduces the closure time of high-traffic areas from 24 hours to 4-5 hours under normal conditions.



SET ACCELERATOR

Tenon Set Accelerator is an ASTM C494, Type C, non-chloride, non-corrosive, liquid that improves workability and initial strength while reducing the hydration time of cement. The product is recommended for use during cooler weather to accelerate set time and reduce the risk of frozen mortar and concrete mixes. It is also recommended for use when early strength gain is desired to speed up projects. Tenon Set Accelerator provides a reduced curing time, faster set time and increased early strength. The product speeds finishing operations in any weather condition without any corrosive effects.



SUPERFLOW

Tenon SuperFlow water-reducing admixture is a full range water reducing additive providing a more plastic and flowable concrete. It produces concrete mixes with different levels of workability to include self-consolidating concrete (SCC) applications. Tenon SuperFlow admixture meets ASTM C494-C494M compliance requirements for Type A water-reducing and Type F high-range water-reducing admixtures.



AIR ENTRAINMENT

Tenon Air Entrainment is a ready-to-use, aqueous solution made of organic materials. Air Entrainment entrains a small and stable amount of air into the desired mix. It is intended for use when increased workability and freeze-thaw durability of concrete or mortar is preferred. This admixture also improves resistance to freeze/thaw, scaling, segregation, and bleeding and improves strength, plasticity, water retention, and cohesiveness of mortar. Meets ASTM C260 Standard Specification for Air-Entraining Admixtures for Concrete.



MIGHTY BOND™

Tenon Mighty Bond is a high-solids, acrylic, liquid bonding agent that substantially improves adhesion, impact, and shear bond, tensile, and flexural and compressive strength of unmodified concrete, mortars, patches and grouts. Additionally, Mighty Bond adds excellent freeze/thaw and salt resistance and creates more durable cement-based materials. Minimal preparation is required.



LEVEL-FLO™ PRIMER PRO

Tenon Level-Flo Primer Pro is a high quality, acrylic latex based primer used with Tenon Level-Flo self-leveling products. It is applied to porous and nonporous surfaces as a substrate primer to promote bonding. This primer can also be used with other cement-based Tenon concrete repair, surface preparation, and polymer-modified thin set mortars. Level-Flo Primer Pro is required to be applied to all substrates before placing Tenon Level-Flo Underlayments or Wear-Toppings.

ABOUT TCC MATERIALS

The manufacturer of high performance Tenon products is TCC Materials. Established in 1957, with locations throughout the Upper Midwest and United States, TCC Materials is able to produce Tenon products throughout its network of manufacturing facilities with specific capabilities to produce specialty products in Minneapolis, Kansas City, Philadelphia and Atlanta.

Behind a robust engineering, manufacturing, sales and customer support team, TCC Materials can ensure your needs for Tenon products are met on every project.



SHOTCRETE

Vertical, overhead or horizontal



Click [here](#) to visit.



D-LR MICROFIBER

Tenon Microfiber is a dry-process shotcrete containing a preblended Portland-limestone cement, air-entraining admixture, set time accelerator, synthetic fibers, selectively blended aggregates, and propriety performance enhancing components. D-LR2 Microfiber is specifically designed to provide low resistivity values complimenting pre-placed cathodic protection systems.

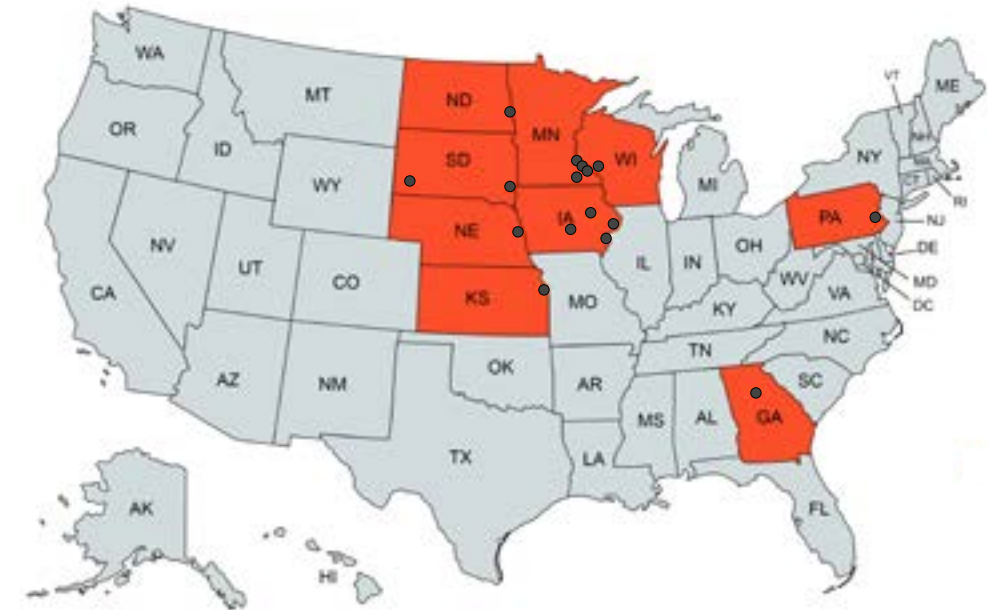


D-SF MICROFIBER

Tenon D-SF Microfiber is a dry process shotcrete containing a preblended Portland-limestone cement, silica fume, air-entraining admixture, set time accelerator, synthetic fibers, selectively blended aggregates, and propriety performance enhancing components. D-SF Microfiber is specifically designed to provide excellent application characteristics with balanced performance properties.

Locations

- Mendota Heights, MN - HQ
- Fairless Hills, PA
- Braselton, GA
- Kansas City, KS
- Medford, MN
- Rosemount, MN
- St Paul, MN
- Des Moines, IA
- Eldridge, IA
- Vinton, IA
- Omaha, NE
- Fargo, ND
- Rapid City, SD
- Sioux Falls, SD
- Roberts, WI



PRODUCT INDEX

- 20% Silane Sealer 24
- 40% Silane Sealer 24
- 40% Silane Sealer WB 24
- 100% Silane Sealer 24
- Air Entrainment 39
- Blend-Pro 12
- Burnished Block Sealer 26
- Burnished Block Sealer WB 26
- Burnished Block Sealer ES 26
- Concrete & Masonry Dissolver 34
- Concrete & Masonry Sealer WB 25
- Concrete & Mortar Dissolver RM 34
- Concrete Patching Mix (3U18) 8
- Concrete Patching Mix AE (3U58M) 8

APPLICATION VIDEO



APPLYING SHOTCRETE

In this video, see how Shotcrete is applied. Shotcrete is typically projected or "shot" at a high velocity to mostly vertical or overhead surfaces. The impact created by the high velocity application consolidates the concrete making it stick in place to cure and perform as specified.



Find the video here!

Concrete Resurfacer 8
Concrete Surface Retarder 38
Construction Grout 14
Cure & Harden 36, 37
Cure & Seal 30
Cure & Seal ES 30
Cure & Seal WB 31
Cure & Seal WB 1315 31, 33
Dissipating Cure 1315 WB 32
Dissipating Cure WB +Plus 32
D-LR Microfiber 40
D-SF Microfiber 40
Fast-Set Liquid Activator 38
Feather Edge Pro 11
Feather Patch Pro 11
FormGuard 36
FormGuard Citrus 36
Hardener LS 37
High Strength Precision Grout 14
Instant Anchoring Cement 9
Instant Hydraulic Cement 17
Level-Flo 100 10
Level-Flo 200 10
Level-Flo 300 10
Level-Flo Primer Pro 39
Masonry Veneer Joint Grout 19
Masonry Veneer Mortar HB 19
Masonry Veneer Mortar PM 19
Metro Mix 9
Metro Mix AE 9
Mighty Bond 39
Partial Depth Concrete Patch 8
Paver Guardian 27
Paver Guardian WB 27
Paver Seal 28
Paver Seal Pro WB 28
Paver Seal & Shine 27
Paver Seal & Shine Pro WB 27
Paver Seal Ultra Shine 28
Paver Wash 28

Pourable Concrete Patch 5
Rapid Patch 100 5
Rapid Patch 200 5
Rapid Patch Commercial Dot Repair 5
Rapid Patch Commercial Dot Repair Extended 6
Rapid Patch Critical Pavement Repair (CPR) 6
Rapid Patch Self-Leveling Resurfacer 6, 10
Rapid Patch Vertical Repair CI 12, 13
Rapid Strength Concrete Mix SE 6
Rapid Strength Construction Grout LT 14
Refractory Mortar 16
Restoration Cleaner 34
Rub-Pro 12
Salt Barrier 22
Salt Barrier WB 22
Salt Barrier ES 22
Self-Consolidating Concrete Mix CI 6
Set Accelerator 39
Set Retarder 38
Siloxane Final Seal 25
Siloxane Sealer 25
Super Clear Coat 33
Super Clear Coat Matte 33
Super Diamond Glaze 33
SuperFlow 39
Surface Bonding Cement CR 13, 17
Thermaseal Geothermal Grout 15
Tile Crete Floor Mud 11
Tile Crete Floor Mud PM 11
TraxGrip 28, 37
Ultimate Barrier 30
Ultimate Barrier ES 30
Ultra High Strength Precision Grout 14
Underground Utility Mortar 16
Vertical Concrete Surface Finisher 12, 13
Vinyl Concrete Patch 8, 13
Waterproofing & Crack Isolation Membrane 17, 19
Wax Cure 1315 WB 32
Wax Cure 309 WB 32
Xylene 34



TENON[®]

PRODUCT GUIDE

CONTACT US

Email • info@tenonsolutions.com • Phone • 651.688.9116

TENONSOLUTIONS.COM